

LUMINA[®]



The Cuts

Product Guide

Sensory Experience



Appearance

Light pink to pale red colour



Taste

Milder taste and aroma (not gamey)



Texture

Delicate and tender mouth-feel



After-taste

Less fatty than regular lamb and subtle flavour



Cooking profile

Fat renders more like pork, doesn't shrink or lose shape



Product Details

Intramuscular Fat /Marbling

The intramuscular fat target of all our lambs is 3-4.5% - levels never seen before in lamb. The combination of our lambs' unique genetics and the finishing on chicory and clover forage is how we achieve the marbling of the intramuscular fat.

Omega 3 & Polyunsaturated Fats

Lumina Lamb has significantly higher levels of Omega-3 and polyunsaturated fats than other lamb. The signature combination of chicory and clover, along with our genetics, is how we achieve this.

Cooking

Chefs have reported a lower fat melting point with Lumina Lamb, which allows the flavours in the fat to meld with the meat, while cooking at lower temperatures.

Eating Experience

The signature of Lumina is its performance, taste and quality. Lumina Lamb has a signature milder taste, exceptional tenderness, and is characterised by a mild aroma and a tantalising, lighter-bodied texture.

Product Consistency

The specifications around Lumina Lamb are tight. The rigorous standards that our farmers adhere to and the meticulous processes that are undertaken in the development of Lumina Lamb ensure the consistency.

All Lumina lambs must be finished on our chicory and clover herb forage for a minimum of 35 days. We have tight criteria around the supply of our lambs, and they must meet specific weight criteria to make the grade.

This is why chefs around the world love our product. We can guarantee the size and specifications of our cuts - making menu creation, portion sizing, preparation and cooking easier. Our chefs know what they are getting every single time.

THE LUMINA WAY™


- ✓ Minimal shrinkage
- ✓ pH: <5.8
- ✓ Intramuscular fat target: 3–4.5%
- ✓ Fat cover target: 5–15mm
- ✓ Traceability and guarantee of origin
- ✓ Free range lamb raised on a special blend of chicory and clover forage
- ✓ Aged 21 days
- ✓ Blast frozen at -21°C (-5.8°F)



The tale of Lumina Lamb

Lumina Lamb is the culmination of a 15-year journey of exploration. The defining achievement of a group of like-minded experts all united by one wildly ambitious goal—to breed the world’s most succulent lamb. One that would offer unrivalled tenderness and texture. A game-changing experience for chefs and diners alike. The very pinnacle of taste.

We think you’ll agree, this collective of farmers, shepherds, agronomists, geneticists, butchers and chefs have surpassed their objective. Born and raised in the New Zealand hill and high country, Lumina lamb is 100% natural, free range, grass-fed and finished on specially cultivated chicory and clover herb pastures. The meat itself is finely marbled and enriched with high levels of naturally occurring Omega-3 polyunsaturated fats. As well as a host of excellent health attributes, Lumina Lamb offers a delicate taste and unrivalled consistency for breath-taking and innovative dish creation.

The Lumina story is one that is still being written. The team behind this striking gastronomic achievement refuse to rest on their laurels. They’re always looking to challenge themselves and find new and exciting ways to delight their customers in the pursuit of delicious perfection 



Lumina Lamb Supreme Shoulder

INTRODUCTION

Lumina presents the new Supreme Shoulder.

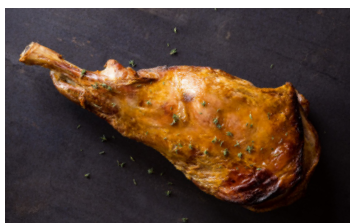
As one of our larger cuts, the Supreme Shoulder has fine intramuscular fat marbling, is extremely succulent and provides a solution to serve premium quality lamb with lower labour costs - a solution to the demand on chefs with labour shortages, margin pressure, and diners' high expectations of quality and taste.

The Lumina Supreme Shoulder brings you the opportunity to increase margins, all while serving New Zealand's most succulent lamb. Comprising the neck fillet, scrag meat, oyster shoulder and fore shank, the Supreme Shoulder is one of the larger of our cuts, giving flexibility with menu creation and lower labour costs.



PRODUCT BENEFITS

- Labour saving:**
efficiencies in product handling due to larger cut.
- Versatility:**
in preparation and serving options.
- Flexibility:**
for portioning and serving, usable for fine-dining to large scale catering.
- Sustainability:**
lower packaging requirements per serve.
- Fewer touch points:**
easy product to prepare, cook and serve due to size, flavour and succulence of product.



Served Whole



Further Processed



Bone-out, pressed & portioned

SUPREME SHOULDER IN ACTION

See how easy the Supreme Shoulder is to prepare, cook and serve with Executive Chef Des Davies, at Te Pae Convention Centre in Christchurch.



FORE

Supreme Shoulder

Oyster shoulder, neck fillet, scrag meat and fore shank.

AGED

21 days

STORAGE

Chilled: 0°C to -2°C
Frozen: below -12°C

- ✓ Antibiotic free
- ✓ Grass-fed
- ✓ Finished on chicory & clover forage
- ✓ Halal
- ✓ Lumina farm assured



PRODUCT SPECIFICATION

Carton dimension: 525x230x160mm

PRODUCT CODE	PIECE WEIGHT RANGE	AVG PIECE WEIGHT	PIECES PER PACK	PACKS PER CARTON	PIECES PER CARTON	AVG CTN WEIGHT
10092626	2.1 - 2.5kg	2.3 kg	1	6	6	13.5 kg

NUTRITIONAL INFORMATION

Average quantity per 100 grams raw edible tissue

ENERGY	PROTEIN	TOTAL FAT	SATURATED FAT	CARBOHYDRATE	SUGAR	SODIUM
905kJ/216kcal	17.3g	16.5g	6.7g	0g	0g	64g

HIND

CKT ABO Leg

Chump and knuckle tip off. Aitch bone out.
Shank on

AGED

21 days

STORAGE

Chilled: 0°C to -2°C
Frozen: below -12°C

- Antibiotic free Grass-fed
- Finished on chicory & clover forage
- Halal Lumina farm assured



PRODUCT SPECIFICATION

Carton dimension: 525x230x160mm

PRODUCT CODE	PIECE WEIGHT RANGE	AVG PIECE WEIGHT	PIECES PER PACK	PACKS PER CARTON	PIECES PER CARTON	AVG CTN WEIGHT
10092530	1.8-2.2 kg	2.1 kg	1	5	5	10.5 kg

NUTRITIONAL INFORMATION

Average quantity per 100 grams raw edible tissue

ENERGY	PROTEIN	TOTAL FAT	SATURATED FAT	CARBOHYDRATE	SUGAR	SODIUM
710kJ/170kcal	19.4g	10.3g	4g	0g	0g	56mg

HIND

Boneless Leg

Chump and shank off.
Tunnel boned

AGED

21 days

STORAGE

Chilled: 0°C to -2°C
Frozen: below -12°C

- Antibiotic free Grass-fed
- Finished on chicory & clover forage
- Halal Lumina farm assured



PRODUCT SPECIFICATION

Carton dimension: 525x230x160mm

PRODUCT CODE	PIECE WEIGHT RANGE	AVG PIECE WEIGHT	PIECES PER PACK	PACKS PER CARTON	PIECES PER CARTON	AVG CTN WEIGHT
10092536	1.1-1.4 kg	1.3 kg	1	10	10	13.0 kg

NUTRITIONAL INFORMATION

Average quantity per 100 grams raw edible tissue

ENERGY	PROTEIN	TOTAL FAT	SATURATED FAT	CARBOHYDRATE	SUGAR	SODIUM
671kJ/160kcal	19.2g	9.3g	3.9g	0g	0g	56mg

HIND

Hind Shank

Twin pack

AGED

10 days

STORAGE

Chilled: 0°C to -2°C
Frozen: below -12°C

- Antibiotic free Grass-fed
- Finished on chicory & clover forage
- Halal Lumina farm assured



PRODUCT SPECIFICATION

Carton dimension: 525x230x160mm

TYPE	PRODUCT CODE	PIECE WEIGHT RANGE	AVG PIECE WEIGHT	PIECES PER PACK	PACKS PER CARTON	PIECES PER CARTON	AVG CTN WEIGHT
below 425 g	10092522	375-425 g	400 g	2	12	24	9.6 kg
425-475 g	10092523	425-475 g	450 g	2	12	24	10.8 kg
over 475 g	10092542	475-515 g	500 g	2	12	24	11.9 kg

NUTRITIONAL INFORMATION

Average quantity per 100 grams raw edible tissue

ENERGY	PROTEIN	TOTAL FAT	SATURATED FAT	CARBOHYDRATE	SUGAR	SODIUM
781kJ/187kcal	21g	11.6g	4.5g	0g	0g	75mg

HIND

D Rump

Fat cap on. Tail removed on seam

AGED

21 days

STORAGE

Chilled: 0°C to -2°C
Frozen: below -12°C

- Antibiotic free Grass-fed
- Finished on chicory & clover forage
- Halal Lumina farm assured



PRODUCT SPECIFICATION

Carton dimension: 525x230x160mm

TYPE	PRODUCT CODE	PIECE WEIGHT RANGE	AVG PIECE WEIGHT	PIECES PER PACK	PACKS PER CARTON	PIECES PER CARTON	AVG CTN WEIGHT
below 300 g	10092526	250-300 g	269 g	4	12	48	12.9 kg
over 300 g	10092499	300-350 g	327 g	4	12	48	15.3 kg

NUTRITIONAL INFORMATION

Average quantity per 100 grams raw edible tissue

ENERGY	PROTEIN	TOTAL FAT	SATURATED FAT	CARBOHYDRATE	SUGAR	SODIUM
988kJ/236kcal	18g	18.4g	8.1g	0g	0g	55mg

HIND

Boneless Rump, cap off

Fat cap off

AGED

21 days

STORAGEChilled: 0°C to -2°C
Frozen: below -12°C

- Antibiotic free Grass-fed
- Finished on chicory & clover forage
- Halal Lumina farm assured

**PRODUCT SPECIFICATION**

Carton dimension: 525x230x160mm

PRODUCT CODE	PIECE WEIGHT RANGE	AVG PIECE WEIGHT	PIECES PER PACK	PACKS PER CARTON	PIECES PER CARTON	AVG CTN WEIGHT
10092531	170-210 g	190 g	4	20	80	15.5 kg

NUTRITIONAL INFORMATION

Average quantity per 100 grams raw edible tissue

ENERGY	PROTEIN	TOTAL FAT	SATURATED FAT	CARBOHYDRATE	SUGAR	SODIUM
492kJ/118kcal	21g	3.7g	1.5g	0g	0g	62mg

HIND

Boneless Rump, cap on

Whole rump. Fat cap on

AGED

21 days

STORAGEChilled: 0°C to -2°C
Frozen: below -12°C

- Antibiotic free Grass-fed
- Finished on chicory & clover forage
- Halal Lumina farm assured

**PRODUCT SPECIFICATION**

Carton dimension: 525x230x160mm

TYPE	PRODUCT CODE	PIECE WEIGHT RANGE	AVG PIECE WEIGHT	PIECES PER PACK	PACKS PER CARTON	PIECES PER CARTON	AVG CTN WEIGHT
350 g-400 g	10092558	350-400 g	375 g	4	8	32	13.5 kg
over 400 g	10092559	400-450 g	425 g	4	8	32	14.5 kg

NUTRITIONAL INFORMATION

Average quantity per 100 grams raw edible tissue

ENERGY	PROTEIN	TOTAL FAT	SATURATED FAT	CARBOHYDRATE	SUGAR	SODIUM
988kJ/236kcal	18g	1.84g	8.1g	0g	0g	51mg

MIDDLE

Boneless Loin, cap off

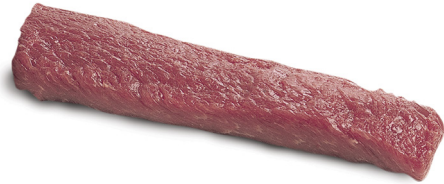
Fat cap / SS off

AGED

21 days

STORAGE

Chilled: 0°C to -2°C
Frozen: below -12°C



- Antibiotic free Grass-fed
- Finished on chicory & clover forage
- Halal Lumina farm assured

PRODUCT SPECIFICATION

Carton dimension: 525x230x160mm

PRODUCT CODE	PIECE WEIGHT RANGE	AVG PIECE WEIGHT	PIECES PER PACK	PACKS PER CARTON	PIECES PER CARTON	AVG CTN WEIGHT
10092532	140-170 g	155 g	4	18	72	11.1 kg

NUTRITIONAL INFORMATION

Average quantity per 100 grams raw edible tissue

ENERGY	PROTEIN	TOTAL FAT	SATURATED FAT	CARBOHYDRATE	SUGAR	SODIUM
521kJ/124kcal	21g	4.3g	1.9g	0g	0g	60mg

MIDDLE

Boneless Loin, cap on

Fat cap on. 0mm tail

AGED

21 days

STORAGE

Chilled: 0°C to -2°C
Frozen: below -12°C



- Antibiotic free Grass-fed
- Finished on chicory & clover forage
- Halal Lumina farm assured

PRODUCT SPECIFICATION

Carton dimension: 525x230x160mm

PRODUCT CODE	PIECE WEIGHT RANGE	AVG PIECE WEIGHT	PIECES PER PACK	PACKS PER CARTON	PIECES PER CARTON	AVG CTN WEIGHT
10092557	250-340 g	280 g	4	12	48	13.4 kg

NUTRITIONAL INFORMATION

Average quantity per 100 grams raw edible tissue

ENERGY	PROTEIN	TOTAL FAT	SATURATED FAT	CARBOHYDRATE	SUGAR	SODIUM
949kJ/227kcal	17.6g	17.6g	7.3g	0g	0g	60mg

MIDDLE

Tenderloin

Butt off

AGED

21 days

STORAGE

Chilled: 0°C to -2°C
Frozen: below -12°C

- Antibiotic free Grass-fed
- Finished on chicory & clover forage
- Halal Lumina farm assured



PRODUCT SPECIFICATION

Carton dimension: 525x230x160mm

PRODUCT CODE	PIECE WEIGHT RANGE	AVG PIECE WEIGHT	PIECES PER PACK	PACKS PER CARTON	PIECES PER CARTON	AVG CTN WEIGHT
10092543	50-65 g	60 g	10	18	180	10.3 kg

NUTRITIONAL INFORMATION

Average quantity per 100 grams raw edible tissue

ENERGY	PROTEIN	TOTAL FAT	SATURATED FAT	CARBOHYDRATE	SUGAR	SODIUM
498kJ/119kcal	21g	4g	1.7g	0g	0g	49mg

MIDDLE

Bone in, Short Loin

0 rib. 75mm tail. Split

AGED

21 days

STORAGE

Chilled: 0°C to -2°C
Frozen: below -12°C

- Antibiotic free Grass-fed
- Finished on chicory & clover forage
- Halal Lumina farm assured



PRODUCT SPECIFICATION

Carton dimension: 525x230x160mm

PRODUCT CODE	PIECE WEIGHT RANGE	AVG PIECE WEIGHT	PIECES PER PACK	PACKS PER CARTON	PIECES PER CARTON	AVG CTN WEIGHT
10092534	650-830 g	740 g	2	10	20	14.8 kg

NUTRITIONAL INFORMATION

Average quantity per 100 grams raw edible tissue

ENERGY	PROTEIN	TOTAL FAT	SATURATED FAT	CARBOHYDRATE	SUGAR	SODIUM
1032kJ/247kcal	16.9g	20.1g	8.5g	0g	0g	63mg

MIDDLE							
<h1>Saddles</h1> <p>8 rib, chump off</p>							
AGED							
21 days							
STORAGE							
Chilled: 0°C to -2°C Frozen: below -12°C							
<input checked="" type="checkbox"/> Antibiotic free <input checked="" type="checkbox"/> Grass-fed <input checked="" type="checkbox"/> Finished on chicory & clover forage <input checked="" type="checkbox"/> Halal <input checked="" type="checkbox"/> Lumina farm assured							
PRODUCT SPECIFICATION Carton dimension: 525x230x160mm							
TYPE	PRODUCT CODE	PIECE WEIGHT RANGE	AVG PIECE WEIGHT	PIECES PER PACK	PACKS PER CARTON	PIECES PER CARTON	AVG CTN WEIGHT
Short loin - 60 mm	10092544	2.8-3.4 kg	3.2 kg	1	4	4	12.7 kg
25 mm	10092574	1.2-1.8 kg	1.5 kg	1	8	8	11.8 kg
NUTRITIONAL INFORMATION Average quantity per 100 grams raw edible tissue							
ENERGY	PROTEIN	TOTAL FAT	SATURATED FAT	CARBOHYDRATE	SUGAR	SODIUM	
1194kJ/285kcal	15.2g	25.3g	11.2g	0g	0g	63mg	

MIDDLE							
<h1>Rib Plate</h1> <p>Rib end of flap. Squared</p>							
AGED							
10 days							
STORAGE							
Chilled: 0°C to -2°C Frozen: below -12°C							
<input checked="" type="checkbox"/> Antibiotic free <input checked="" type="checkbox"/> Grass-fed <input checked="" type="checkbox"/> Finished on chicory & clover forage <input checked="" type="checkbox"/> Halal <input checked="" type="checkbox"/> Lumina farm assured							
PRODUCT SPECIFICATION Carton dimension: 525x230x160mm							
PRODUCT CODE	PIECE WEIGHT RANGE	AVG PIECE WEIGHT	PIECES PER PACK	PACKS PER CARTON	PIECES PER CARTON	AVG CTN WEIGHT	
10092546	500-700 g	600 g	4	8	32	19.2 kg	
NUTRITIONAL INFORMATION Average quantity per 100 grams raw edible tissue							
ENERGY	PROTEIN	TOTAL FAT	SATURATED FAT	CARBOHYDRATE	SUGAR	SODIUM	
1522kJ/364kcal	13.8g	15g	34.8g	0g	0g	69mg	

MIDDLE

Frenched Rack, cap on

75/25mm. Single pack

AGED

21 days

STORAGE

Chilled: 0°C to -2°C
Frozen: below -12°C

- Antibiotic free Grass-fed
- Finished on chicory & clover forage
- Halal Lumina farm assured



PRODUCT SPECIFICATION

Carton dimension: 525x230x160mm

TYPE	PRODUCT CODE	PIECE WEIGHT RANGE	AVG PIECE WEIGHT	PIECES PER PACK	PACKS PER CARTON	PIECES PER CARTON	AVG CTN WEIGHT
below 600 g	10092571	500-600 g	560 g	1	14	14	7.8 kg
600-700 g	10092572	600-700 g	650 g	1	14	14	9.0 kg
above 700 g	10092573	700-800 g	750 g	1	14	14	10.5 kg

NUTRITIONAL INFORMATION

Average quantity per 100 grams raw edible tissue

ENERGY	PROTEIN	TOTAL FAT	SATURATED FAT	CARBOHYDRATE	SUGAR	SODIUM
1008kJ/241kcal	18.2g	18.9g	8.5g	0g	0g	61mg

MIDDLE

Frenched Rack, cap off

75/25mm. Twin pack

AGED

21 days

STORAGE

Chilled: 0°C to -2°C
Frozen: below -12°C

- Antibiotic free Grass-fed
- Finished on chicory & clover forage
- Halal Lumina farm assured



PRODUCT SPECIFICATION

Carton dimension: 525x230x160mm


PRODUCT CODE	PIECE WEIGHT RANGE	AVG PIECE WEIGHT	PIECES PER PACK	PACKS PER CARTON	PIECES PER CARTON	AVG CTN WEIGHT
10092538 / 10092591	430-530 g	480 g	2	12	24	11.5 kg

NUTRITIONAL INFORMATION

Average quantity per 100 grams raw edible tissue

ENERGY	PROTEIN	TOTAL FAT	SATURATED FAT	CARBOHYDRATE	SUGAR	SODIUM
1008kJ/241kcal	18.2g	18.9g	8.5g	0g	0g	61mg

FORE							
<h1>Oyster Shoulder</h1> <p>Shank off</p>							
AGED 21 days							
STORAGE Chilled: 0°C to -2°C Frozen: below -12°C							
<input checked="" type="checkbox"/> Antibiotic free <input checked="" type="checkbox"/> Grass-fed <input checked="" type="checkbox"/> Finished on chicory & clover forage <input checked="" type="checkbox"/> Halal <input checked="" type="checkbox"/> Lumina farm assured							
PRODUCT SPECIFICATION Carton dimension: 525x230x160mm							
TYPE	PRODUCT CODE	PIECE WEIGHT RANGE	AVG PIECE WEIGHT	PIECES PER PACK	PACKS PER CARTON	PIECES PER CARTON	AVG CTN WEIGHT
below 1.2 kg	10092539	0.9-1.2 kg	1.1 kg	1	12	12	13.2 kg
over 1.2 kg	10092545	1.2-1.3 kg	1.25 kg	1	12	12	15.0 kg
NUTRITIONAL INFORMATION Average quantity per 100 grams raw edible tissue							
ENERGY	PROTEIN	TOTAL FAT	SATURATED FAT	CARBOHYDRATE	SUGAR	SODIUM	
841kJ/201kcal	17.5g	14.7g	5.8g	0g	0g	58mg	

FORE							
<h1>Square Cut Shoulder</h1> <p>5 rib</p>							
AGED 21 days							
STORAGE Chilled: 0°C to -2°C Frozen: below -12°C							
<input checked="" type="checkbox"/> Antibiotic free <input checked="" type="checkbox"/> Grass-fed <input checked="" type="checkbox"/> Finished on chicory & clover forage <input checked="" type="checkbox"/> Halal <input checked="" type="checkbox"/> Lumina farm assured							
PRODUCT SPECIFICATION Carton dimension: 525x230x160mm							
PRODUCT CODE	PIECE WEIGHT RANGE	AVG PIECE WEIGHT	PIECES PER PACK	PACKS PER CARTON	PIECES PER CARTON	AVG CTN WEIGHT	
10092541	1.9-2.3 kg	2.1 kg	1	8	8	17.5 kg	
NUTRITIONAL INFORMATION Average quantity per 100 grams raw edible tissue							
ENERGY	PROTEIN	TOTAL FAT	SATURATED FAT	CARBOHYDRATE	SUGAR	SODIUM	
1105kJ/264kcal	15.8g	22.6g	9.3g	0g	0g	58mg	

FORE

Boneless Shoulder

AGED

21 days

STORAGE

Chilled: 0°C to -2°C
Frozen: below -12°C

- Antibiotic free Grass-fed
- Finished on chicory & clover forage
- Halal Lumina farm assured



PRODUCT SPECIFICATION

Carton dimension: 525x230x160mm

PRODUCT CODE	PIECE WEIGHT RANGE	AVG PIECE WEIGHT	PIECES PER PACK	PACKS PER CARTON	PIECES PER CARTON	AVG CTN WEIGHT
10092527	1.2-1.5 kg	1.3 kg	2	6	12	16.2 kg

NUTRITIONAL INFORMATION

Average quantity per 100 grams raw edible tissue

ENERGY	PROTEIN	TOTAL FAT	SATURATED FAT	CARBOHYDRATE	SUGAR	SODIUM
864kJ/206kcal	17.5g	15.3g	6.4g	0g	0g	58mg

FORE

Saratoga Rack

4 rib, frenched 50/75mm

AGED

21 days

STORAGE

Chilled: 0°C to -2°C
Frozen: below -12°C

- Antibiotic free Grass-fed
- Finished on chicory & clover forage
- Halal Lumina farm assured



PRODUCT SPECIFICATION

Carton dimension: 525x230x160mm

PRODUCT CODE	PIECE WEIGHT RANGE	AVG PIECE WEIGHT	PIECES PER PACK	PACKS PER CARTON	PIECES PER CARTON	AVG CTN WEIGHT
10092529	275-310 g	290 g	2	15	30	8.7 kg

NUTRITIONAL INFORMATION

Average quantity per 100 grams raw edible tissue

ENERGY	PROTEIN	TOTAL FAT	SATURATED FAT	CARBOHYDRATE	SUGAR	SODIUM
863kJ/206kcal	17.5g	15.3g	6.4g	0g	0g	76mg

FORE

Fore Shank

Bone in, 3VP

AGED

10 days

STORAGE

Chilled: 0°C to -2°C
Frozen: below -12°C

- Antibiotic free Grass-fed
- Finished on chicory & clover forage
- Halal Lumina farm assured



PRODUCT SPECIFICATION

Carton Dimension: 525x230x160mm

PRODUCT CODE	PIECE WEIGHT RANGE	AVG PIECE WEIGHT	PIECES PER PACK	PACKS PER CARTON	PIECES PER CARTON	AVG CTN WEIGHT
10092547	320-385 g	352 g	3	12	36	12.7 kg

NUTRITIONAL INFORMATION

Average quantity per 100 grams raw edible tissue

ENERGY	PROTEIN	TOTAL FAT	SATURATED FAT	CARBOHYDRATE	SUGAR	SODIUM
842kJ/201kcal	19.1g	13.5g	5.4g	0g	0g	64mg

FORE

Neck Fillet

4/5 rib, boneless

AGED

21 days

STORAGE

Chilled: 0°C to -2°C
Frozen: below -12°C

- Antibiotic free Grass-fed
- Finished on chicory & clover forage
- Halal Lumina farm assured



PRODUCT SPECIFICATION

Carton dimension: 525x230x160mm

PRODUCT CODE	PIECE WEIGHT RANGE	AVG PIECE WEIGHT	PIECES PER PACK	PACKS PER CARTON	PIECES PER CARTON	AVG CTN WEIGHT
10092549	150-190 g	170 g	6	12	72	12.2 kg

NUTRITIONAL INFORMATION

Average quantity per 100 grams raw edible tissue

ENERGY	PROTEIN	TOTAL FAT	SATURATED FAT	CARBOHYDRATE	SUGAR	SODIUM
863kJ/206kcal	17.5g	15.3g	6.4g	0g	0g	64mg

FORE

Osso Bucco

Sliced foreshanks

AGED

10 days

STORAGE

Chilled: 0°C to -2°C
Frozen: below -12°C

- Antibiotic free Grass-fed
- Finished on chicory & clover forage
- Halal Lumina farm assured



PRODUCT SPECIFICATION

Carton dimension: 525x230x160mm

PRODUCT CODE	PIECE WEIGHT RANGE	AVG PIECE WEIGHT	PIECES PER PACK	PACKS PER CARTON	PIECES PER CARTON	AVG CTN WEIGHT
10092586	-	1 kg	-	12	-	12 kg

NUTRITIONAL INFORMATION

Average quantity per 100 grams raw edible tissue

ENERGY	PROTEIN	TOTAL FAT	SATURATED FAT	CARBOHYDRATE	SUGAR	SODIUM
842kJ/201kcal	19.1g	13.5g	5.4g	0g	0g	64mg

OFFAL

Sweetbreads

Heart and throat breads

STORAGE

Chilled: 0°C to -2°C
Frozen: below -12°C

- Antibiotic free
- Halal
- Lumina farm assured
- Grass-fed
- Finished on chicory & clover forage



PRODUCT SPECIFICATION

Carton dimension: 525x230x160mm

PRODUCT CODE	PIECE WEIGHT RANGE	AVG PIECE WEIGHT	PIECES PER PACK	PACKS PER CARTON	PIECES PER CARTON	AVG CTN WEIGHT
10092569	500 g per pack	-	-	32	-	16.0 kg

NUTRITIONAL INFORMATION

Average quantity per 100 grams raw edible tissue

ENERGY	PROTEIN	TOTAL FAT	SATURATED FAT	CARBOHYDRATE	SUGAR	SODIUM
496kJ/119kcal	15.5g	6.3g	2.3g	0g	0g	55mg

OFFAL

Hearts

STORAGE

Chilled: 0°C to -2°C
Frozen: below -12°C

- ✓ Antibiotic free
- ✓ Halal
- ✓ Lumina farm assured
- ✓ Grass-fed
- ✓ Finished on chicory & clover forage



PRODUCT SPECIFICATION

Carton dimension: 525x230x160mm

PRODUCT CODE	PIECE WEIGHT RANGE	AVG PIECE WEIGHT	PIECES PER PACK	PACKS PER CARTON	PIECES PER CARTON	AVG CTN WEIGHT
10092562	170-190 g	180 g	6	10	60	10.7 kg

NUTRITIONAL INFORMATION

Average quantity per 100 grams raw edible tissue

ENERGY	PROTEIN	TOTAL FAT	SATURATED FAT	CARBOHYDRATE	SUGAR	SODIUM
783kJ/187kcal	16g	13.8g	5.7g	0g	0g	84mg

OFFAL

Kidney

STORAGE

Chilled: 0°C to -2°C
Frozen: below -12°C

- ✓ Antibiotic free
- ✓ Halal
- ✓ Lumina farm assured
- ✓ Grass-fed
- ✓ Finished on chicory & clover forage



PRODUCT SPECIFICATION

Carton dimension: 525x230x160mm

PRODUCT CODE	PIECE WEIGHT RANGE	AVG PIECE WEIGHT	PIECES PER PACK	PACKS PER CARTON	PIECES PER CARTON	AVG CTN WEIGHT
10092561	50-70 g	60 g	10	12	120	7.2 kg

NUTRITIONAL INFORMATION

Average quantity per 100 grams raw edible tissue

ENERGY	PROTEIN	TOTAL FAT	SATURATED FAT	CARBOHYDRATE	SUGAR	SODIUM
349kJ/83kcal	15.2g	2.5g	0.8g	0g	0g	168mg

OFFAL

Tongue

STORAGE

Chilled: 0°C to -2°C
Frozen: below -12°C

- ✓ Antibiotic free
- ✓ Halal
- ✓ Lumina farm assured
- ✓ Grass-fed
- ✓ Finished on chicory & clover forage



PRODUCT SPECIFICATION

Carton dimension: 525x230x160mm

PRODUCT CODE	PIECE WEIGHT RANGE	AVG PIECE WEIGHT	PIECES PER PACK	PACKS PER CARTON	PIECES PER CARTON	AVG CTN WEIGHT
10092570	0.9-1.1 kg	1 kg	1	7	7	7 kg

NUTRITIONAL INFORMATION

Average quantity per 100 grams raw edible tissue

ENERGY	PROTEIN	TOTAL FAT	SATURATED FAT	CARBOHYDRATE	SUGAR	SODIUM
1120kJ/268kcal	13.3g	24g	8.6g	0g	0g	73mg

OFFAL

Liver

STORAGE

Chilled: 0°C to -2°C
Frozen: below -12°C

- ✓ Antibiotic free
- ✓ Halal
- ✓ Lumina farm assured
- ✓ Grass-fed
- ✓ Finished on chicory & clover forage



PRODUCT SPECIFICATION

Carton dimension: 525x230x160mm

PRODUCT CODE	PIECE WEIGHT RANGE	AVG PIECE WEIGHT	PIECES PER PACK	PACKS PER CARTON	PIECES PER CARTON	AVG CTN WEIGHT
10090176	700-800 g	750 g	2	8	16	12.5 kg

NUTRITIONAL INFORMATION

Average quantity per 100 grams raw edible tissue

ENERGY	PROTEIN	TOTAL FAT	SATURATED FAT	CARBOHYDRATE	SUGAR	SODIUM
529kJ/126kcal	20.7g	4.9g	1.5g	0g	0g	-

MINCE

Mince

AGED

21 days

STORAGE

Chilled: 0°C to -2°C
Frozen: below -12°C



- Antibiotic free Grass-fed
- Finished on chicory & clover forage
- Halal Lumina farm assured

PRODUCT SPECIFICATION

Carton dimension: 525x230x160mm

TYPE	PRODUCT CODE	PIECE WEIGHT RANGE	AVG PIECE WEIGHT	PIECES PER PACK	PACKS PER CARTON	PIECES PER CARTON	AVG CTN WEIGHT
2 kg pack	10082025	-	2 kg pack	-	10	10	20 kg
5 kg pack	10082006	-	5 kg pack	-	4	4	20 kg

NUTRITIONAL INFORMATION

Average quantity per 100 grams raw edible tissue

ENERGY	PROTEIN	TOTAL FAT	SATURATED FAT	CARBOHYDRATE	SUGAR	SODIUM
461kJ/110kcal	21g	2.93g	1.57g	0g	0g	71mg



LUMINA[®]



LAMB OF AOTEAROA
NEW ZEALAND